



5 Ings Court Esk Drive, Poppleton Park, York, YO26 6RP


Guide Price £200,000


YORK'S INDEPENDENT LOCAL ESTATE AGENT

- Offering large living space
- Master with en-suite shower room/wc
- Modern fitted kitchen
- Allocated car parking space and visitor spaces

THE PROPERTY

A FANTASTIC LARGE TWO DOUBLE BEDROOM SECOND FLOOR APARTMENT WITH PRIVATE PARKING. Attractive and tastefully presented living accommodation comprises hall, large living room, modern fitted kitchen with integrated appliances, 2 double bedrooms (master having en suite shower room) plus further family bathroom/WC. To the outside is an allocated car parking space plus visitor spaces. An internal viewing is highly recommended.

Energy Efficiency Rating		
	Current	Potential
Very energy efficient - lower running costs		
(92 plus) A		
(81-91) B		
(69-80) C		
(55-68) D		
(39-54) E		
(21-38) F		
(1-20) G		
Not energy efficient - higher running costs		
England & Wales	EU Directive 2002/91/EC 	

ACCOMMODATION

Entrance Hall

Living Room

14'11" x 13'7"

Breakfast Kitchen

10'4" x 9'10"

Master Bedroom

13'3" x 10'6"

En Suite Shower Room

Bedroom 2

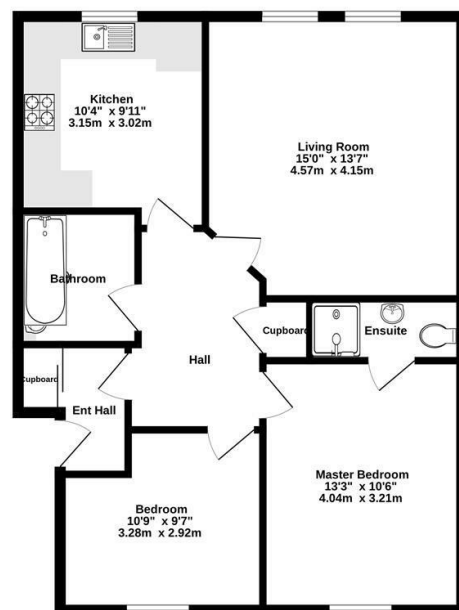
10'9" x 9'6"

Family Bathroom

Outside

Allocated parking space plus Visitor spaces

Ground Floor
719 sq.ft. (66.8 sq.m.) approx.



TOTAL FLOOR AREA: 719 sq.ft. (66.8 sq.m.) approx.
Whilst every attempt has been made to ensure the accuracy of the figures contained herein, measurements of doors, windows, rooms and any other items are approximate and no responsibility is taken for any error, omission or misstatement. This plan is for illustrative purposes only and should be used as such by any prospective purchaser. The services, systems and appliances shown have not been tested and no guarantee as to their operation or efficiency can be given.
Made with Hotplan C2008

Anglia House, 3a Bishopthorpe Road, York, YO23 1NA

Tel: 01904 646611 Email: info@churchillsyork.com www.churchillsestateagents.co.uk